

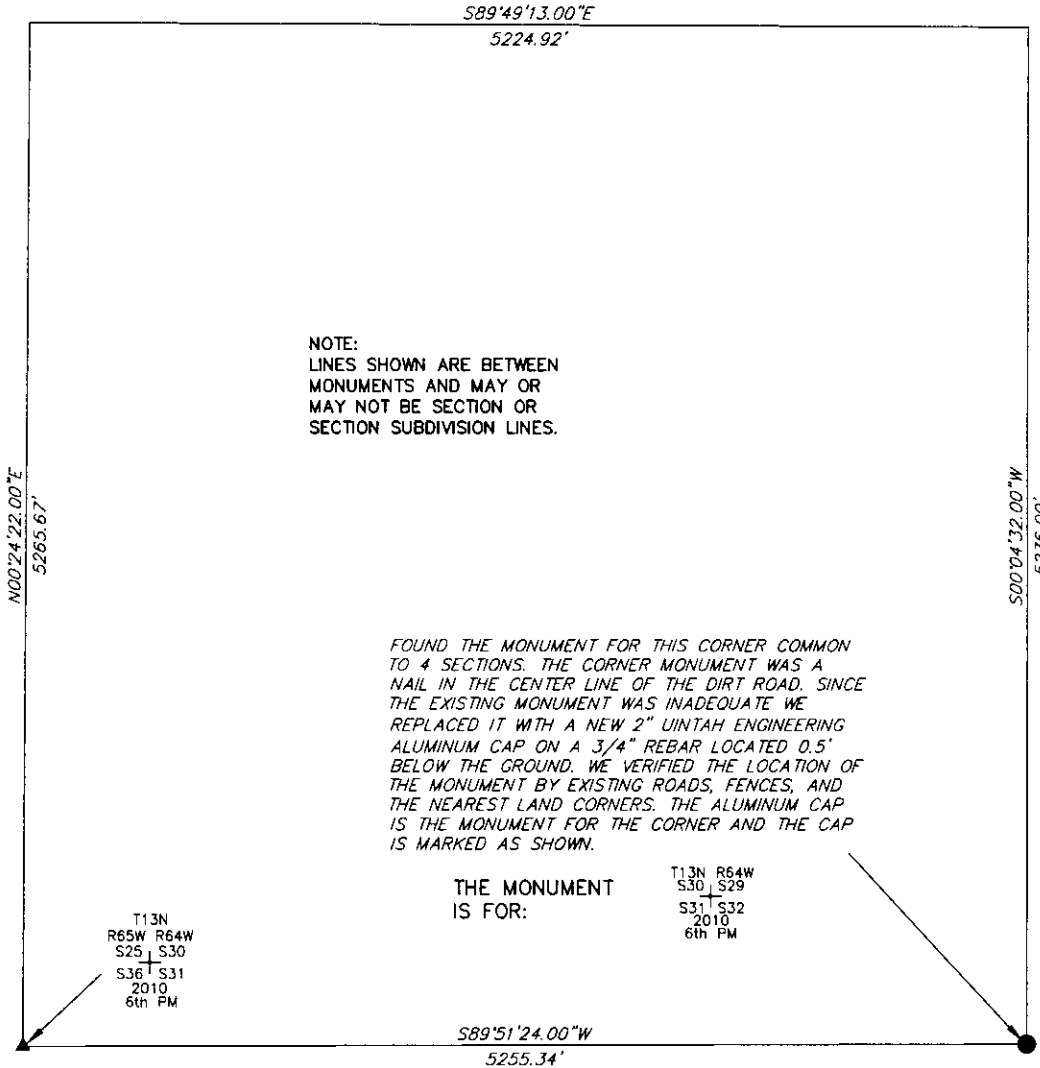
State of Wyoming Corner Record

CORNER PERPETUATION AND FILING ACT,

Regulations of the Board of Registration for Professional Engineers and Land Surveyors.)

Reverse side of this form may be used if more space is needed.

Record of original survey and citation of source of historic information (if corner is lost or obliterated). Description of corner monumentation evidence found and/or monument and accessories established to perpetuate the location of this corner. Sketch of relative location of monument, accessories, and reference points with course and distance to adjacent corner(s) (if determined in this survey). Method and rationale for reestablishment of lost or obliterated corner.



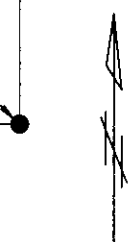
NOTE:
LINES SHOWN ARE BETWEEN
MONUMENTS AND MAY OR
MAY NOT BE SECTION OR
SECTION SUBDIVISION LINES.

FOUND THE MONUMENT FOR THIS CORNER COMMON TO 4 SECTIONS. THE CORNER MONUMENT WAS A NAIL IN THE CENTER LINE OF THE DIRT ROAD. SINCE THE EXISTING MONUMENT WAS INADEQUATE WE REPLACED IT WITH A NEW 2" UINTAH ENGINEERING ALUMINUM CAP ON A 3/4" REBAR LOCATED 0.5' BELOW THE GROUND. WE VERIFIED THE LOCATION OF THE MONUMENT BY EXISTING ROADS, FENCES, AND THE NEAREST LAND CORNERS. THE ALUMINUM CAP IS THE MONUMENT FOR THE CORNER AND THE CAP IS MARKED AS SHOWN.

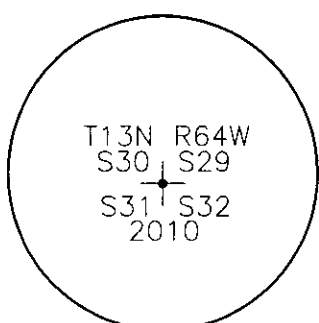
THE MONUMENT IS FOR:

T13N R64W
S30 S29
S31 S32
2010
6th PM

T13N R65W R64W
S25 S30
S36 S31
2010
6th PM



SCALE 1"=1000'
(EXCEPT IN TRIVIAL CASES)
BEARINGS ARE RELATED TO WGS 84 WITH GPS OBSERVATIONS
DRAWN BY: AM
P.C. L. PENCE
COUNTY: LARAMIE



- CORNER MONUMENT SYMBOLS
- RECORD IS FOR THIS CORNER MONUMENT.
 - ▲ A RELATED CORNER OR WC MONUMENT.

THE MONUMENT IS MARKED

Date of Field Work: 05/05/2010 Office Reference: _____

CROSS INDEX DIAGRAM

A	1	2	3	4	5	6	7	8	9	10	11	12	13	14	15	16	17	18	19	20	21	22	23	24	25	A
B																										B
C																										C
D																										D
E																										E
F																										F
G																										G
H																										H
I																										I
J																										J
K																										K
L																										L
M																										M
N																										N
O																										O
P																										P
Q																										Q
R																										R
S																										S
T																										T
U																										U
V																										V
W																										W
X																										X
Y																										Y
Z																										Z

Firm/Agency, Address
UELS, LLC
85 South 200 East
Vernal, Utah 84078
 Telephone Number: 435-789-1017

This corner record was prepared by me or under my direction and supervision.
 SEAL & SIGNATURE



RECORDED 12/08/2011 AT 1:18 PM REC# 581072 BK# 2249 PG# 399
 DEBRA K. LATHROP, CLERK OF LARAMIE COUNTY, WY PAGE 1 OF 1